

## DELEGATIONS OF PRESIDENTIAL AUTHORITY – INDEX & FLOWCHARTS

D	SUB-D #1	SUB-D #2	SUB-D #3	SUB-D #4	FROM	TO:
<u>D1</u>					USF President	Executive Vice President, Provost Executive Vice President for USF Health Senior Vice President for Legal Affairs & General Counsel and Chief Strategy Officer Senior Vice President for Advancement and Alumni Relations Senior Vice President, Chief Human Resources and Administrative Officer Senior Vice President for University Community Partnerships Vice President for Research & Innovation Regional Chancellor of USF Sarasota-Manatee Campus Regional Chancellor of USF St. Petersburg Campus Vice President for Communications & Marketing and Chief Marketing Officer Vice President for Athletics Vice President for Business and Finance and Chief Financial Officer Assistant Vice President for Government Relations Executive Chief Internal Auditor Chief of Staff Chief Compliance Officer
<u>D2</u>					USF President	USF Provost (Executive Vice President)
	<u>D2-1</u>				USF Provost (Executive Vice President)	Vice President for Student Affairs and Student Success
		<u>D2-1-1</u>			Vice President for Student Affairs and Student Success	Assistant Vice President for Student Affairs and Student Success (Dean of Students)
			<u>D2-1-1-1</u>		Assistant Vice President for Student Affairs and Student Success (Dean of Students)	Director Marshall Student Center

See [USF Policy 0-100: Delegations of General Authority and Signatory Authority](#) for general guidelines for Delegations of Authority.

*Flowcharts are for illustrative purposes and may not reflect the most recent delegations, which can be found in the Delegations Index.*

## DELEGATIONS OF PRESIDENTIAL AUTHORITY – INDEX & FLOWCHARTS

D	SUB-D #1	SUB-D #2	SUB-D #3	SUB-D #4	FROM	TO:
			<a href="#"><u>D2-1-1-2</u></a>		Assistant Vice President for Student Affairs and Student Success (Dean of Students)	Associate Dean of Students
			<a href="#"><u>D2-1-1-3</u></a>		Assistant Vice President for Student Affairs and Student Success (Dean of Students)	Director, Center for Student Involvement
		<a href="#"><u>D2-1-2</u></a>			Vice President for Student Affairs and Student Success	Director for Student Government Advising, Training & Operations
	<a href="#"><u>D2-2</u></a>				USF Provost (Executive Vice President)	Vice President for USF World
	<a href="#"><u>D2-3</u></a>				USF Provost (Executive Vice President)	Dean of the College of Arts and Sciences Dean of the College of Behavioral and Community Sciences Dean of the College of Business Dean of the College of Education Dean of the College of Engineering Dean of the College of Global Sustainability Dean of the Office of Graduate Studies Dean of the Honors College Dean of the College of Marine Science Dean of the Office of Undergraduate Studies
	<a href="#"><u>D2-4</u></a>				USF Provost (Executive Vice President)	Dean of the College of the Arts
	<a href="#"><u>D2-5</u></a>				USF Provost (Executive Vice President)	Associate Dean of the College of the Arts; Director of the Institute for Research in Art: Contemporary Art Museum/ Graphicstudio

See [USF Policy 0-100: Delegations of General Authority and Signatory Authority](#) for general guidelines for Delegations of Authority.

*Flowcharts are for illustrative purposes and may not reflect the most recent delegations, which can be found in the Delegations Index.*

## DELEGATIONS OF PRESIDENTIAL AUTHORITY – INDEX & FLOWCHARTS

D	SUB-D #1	SUB-D #2	SUB-D #3	SUB-D #4	FROM	TO:
	<a href="#"><u>D2-6</u></a>				USF Provost (Executive Vice President)	Regional Vice Chancellor for Academic and Student Affairs, USF Sarasota Manatee
	<a href="#"><u>D2-7</u></a>				USF Provost (Executive Vice President)	Director of the Florida Institute of Oceanography
<a href="#"><u>D3</u></a>					USF President	Senior Vice President, Financial Strategy (CFO) and Administrative Services
	<a href="#"><u>D3-1</u></a>				Senior Vice President, Financial Strategy (CFO) and Administrative Services	Vice President of Business & Finance, Deputy Chief Financial Officer and Controller
		<a href="#"><u>D3-1-1</u></a>			Reserved	Reserved
			<a href="#"><u>D3-1-1-1</u></a>		Vice President of Business & Finance, Deputy Chief Financial Officer and Controller	Director of Purchasing Services
				<a href="#"><u>D-3-1-1-1-1</u></a>	Director of Purchasing Services	Assistant Director of Purchasing Services; Associate Director of Purchasing Services
				<a href="#"><u>D-3-1-1-1-2</u></a>	Director of Purchasing Services	Senior Purchasing Agent(s); Purchasing Agent(s)
				<a href="#"><u>D-3-1-1-1-3</u></a>	Director of Purchasing Services	Purchasing Manager; Purchasing Administrator
		<a href="#"><u>D3-1-2</u></a>			Vice President of Business and Finance, Chief Financial Officer and Controller	Assistant Vice President of Housing & Residential Education

See [USF Policy 0-100: Delegations of General Authority and Signatory Authority](#) for general guidelines for Delegations of Authority.

*Flowcharts are for illustrative purposes and may not reflect the most recent delegations, which can be found in the Delegations Index.*

## DELEGATIONS OF PRESIDENTIAL AUTHORITY – INDEX & FLOWCHARTS

D	SUB-D #1	SUB-D #2	SUB-D #3	SUB-D #4	FROM	TO:
	<a href="#"><u>D3-2</u></a>				Senior Vice President, Financial Strategy (CFO) and Administrative Services	Vice President for Administrative Services
		<a href="#"><u>D3-2-2</u></a>			Vice President for Administrative Services	Assistant Vice President for Facilities Management
			<a href="#"><u>D3-2-2-1</u></a>		Assistant Vice President for Facilities Management	Director, Environmental Health and Safety
				<a href="#"><u>D3-2-2-1-1</u></a>	Director of Environmental Health and Safety	Associate Director, Risk and Insurance Coordinator, Environmental Health & Safety
		<a href="#"><u>D3-2-3</u></a>			Vice President for Administrative Services	Director of Parking and Transportation Services
	<a href="#"><u>D3-3</u></a>				Senior Vice President, Financial Strategy (CFO) and Administrative Services	Chief of University Police
	<a href="#"><u>D3-4</u></a>				Senior Vice President, Financial Strategy (CFO) and Administrative Services	Vice President for Technology (Chief Information Officer)
	<a href="#"><u>D3-5</u></a>				Senior Vice President, Financial Strategy (CFO) and Administrative Services	Associate Vice President of Human Resources
<a href="#"><u>D4</u></a>					USF President	Executive Vice President, USF Health
	<a href="#"><u>D4-1</u></a>				Executive Vice President, USF Health	Chief Financial Officer, USF Health

See [USF Policy 0-100: Delegations of General Authority and Signatory Authority](#) for general guidelines for Delegations of Authority.

*Flowcharts are for illustrative purposes and may not reflect the most recent delegations, which can be found in the Delegations Index.*

## DELEGATIONS OF PRESIDENTIAL AUTHORITY – INDEX & FLOWCHARTS

D	SUB-D #1	SUB-D #2	SUB-D #3	SUB-D #4	FROM	TO:
	<a href="#"><u>D4-2</u></a>				Executive Vice President, USF Health	Dean College of Nursing
	<a href="#"><u>D4-3</u></a>				Executive Vice President, USF Health	Dean College of Pharmacy
	<a href="#"><u>D4-4</u></a>				Executive Vice President, USF Health	Dean College of Public Health
	<a href="#"><u>D4-5</u></a>				Executive Vice President, USF Health	Senior Vice President, Dean for Graduate Medical Education
	<a href="#"><u>D4-6</u></a>				Executive Vice President, USF Health	Associate Dean, Continuing Professional Development, USF Health Director, Continuing Professional Development, USF Health
	<a href="#"><u>D4-7</u></a>				Executive Vice President, USF Health	Associate Vice President, Health Law, Policy and Safety, USF Health
	<a href="#"><u>D4-8</u></a>				Executive Vice President, USF Health	Assistant Vice President for Administration, USF Health
	<a href="#"><u>D4-9</u></a>				Executive Vice President, USF Health	Associate Vice President, Associate Dean, Research Administration, USF Health, Morsani College of Medicine
	<a href="#"><u>D4-10</u></a>				Executive Vice President, USF Health	Director, USF Health School of Physical Therapy & Rehabilitative Services
<a href="#"><u>D5</u></a>					USF President	Vice President for Research, Innovation & Economic Development
	<a href="#"><u>D5-1</u></a>				Vice President for Research, Innovation & Economic Development	Director, Technology Transfer Office/Patents & Licensing

See [USF Policy 0-100: Delegations of General Authority and Signatory Authority](#) for general guidelines for Delegations of Authority.

*Flowcharts are for illustrative purposes and may not reflect the most recent delegations, which can be found in the Delegations Index.*

## DELEGATIONS OF PRESIDENTIAL AUTHORITY – INDEX & FLOWCHARTS

D	SUB-D #1	SUB-D #2	SUB-D #3	SUB-D #4	FROM	TO:
		<a href="#"><u>D5-1-1</u></a>			Director, Technology Transfer Office/Patents & Licensing	Associate Director, Technology Transfer Office/Patents & Licensing
			<a href="#"><u>D5-1-1-1</u></a>		Director, Technology Transfer Office/Patents & Licensing	Associate and Assistant Director(s), Technology Transfer Office/Patents & Licensing
	<a href="#"><u>D5-2</u></a>				Vice President for Research, Innovation & Economic Development	Associate Vice President, Research, Innovation & Economic Development
		<a href="#"><u>D5-2-1</u></a>			Associate Vice President for Research, Innovation & Economic Development	Director, Sponsored Research
			<a href="#"><u>D5-2-1-1</u></a>		Director, Sponsored Research	Associate and Assistant Director(s), Sponsored Research
		<a href="#"><u>D5-2-2</u></a>			Vice President for Research, Innovation & Economic Development	Director, Research Integrity & Compliance
			<a href="#"><u>D5-2-2-1</u></a>		Director, Research Integrity & Compliance	Assistant Director, Regulatory Affairs
	<a href="#"><u>D5-3</u></a>				Vice President for Research, Innovation & Economic Development	Chief Operating Officer, USF Research Foundation
<a href="#"><u>D6</u></a>					USF President	Senior Vice President of Advancement and Alumni Relations
<a href="#"><u>D9</u></a>					USF President	Associate Vice President & Chief Diversity Officer
<a href="#"><u>D10</u></a>					USF President	Chief Audit Executive and Executive Director of USF Audit

See [USF Policy 0-100: Delegations of General Authority and Signatory Authority](#) for general guidelines for Delegations of Authority.

*Flowcharts are for illustrative purposes and may not reflect the most recent delegations, which can be found in the Delegations Index.*

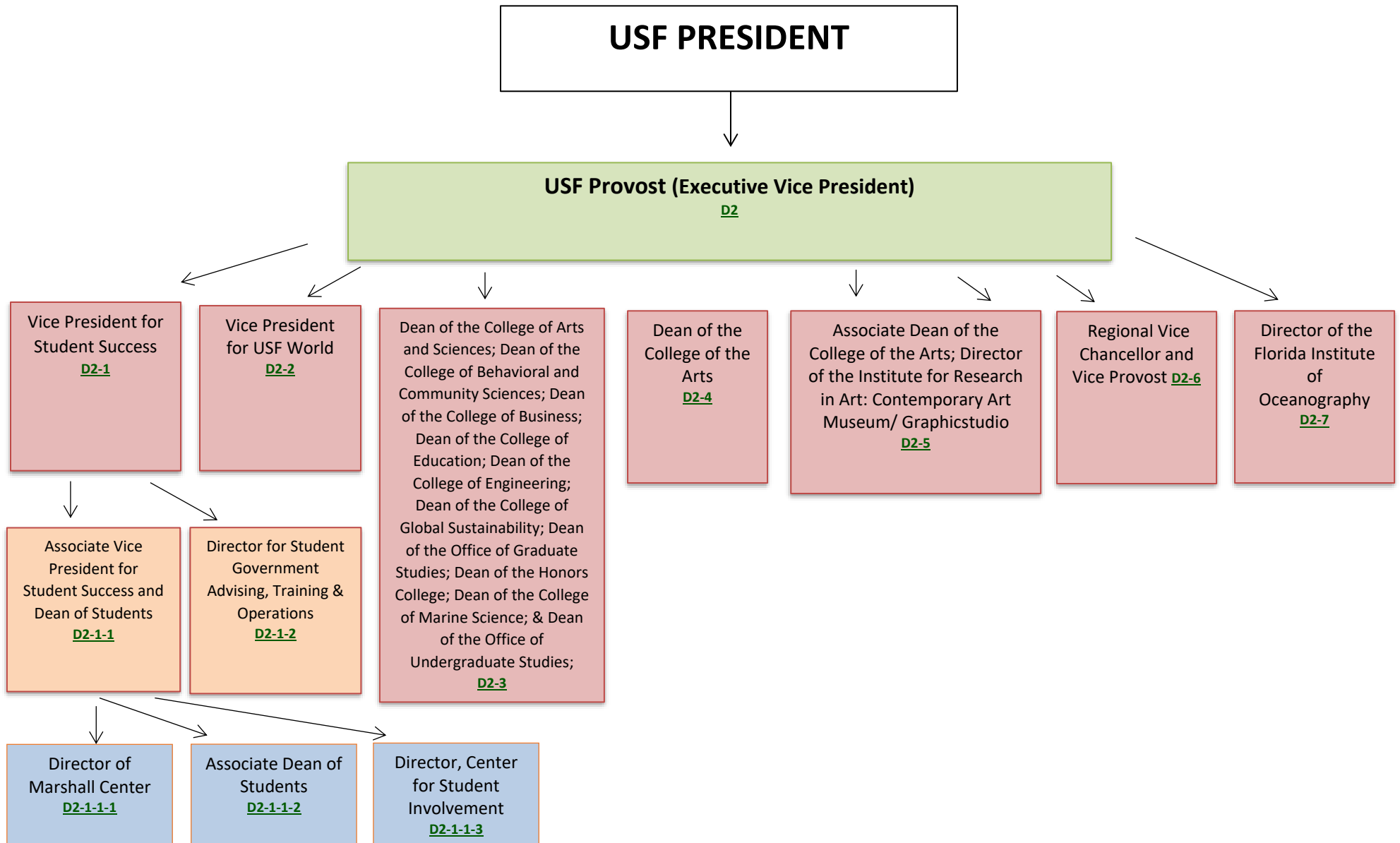
## DELEGATIONS OF PRESIDENTIAL AUTHORITY – INDEX & FLOWCHARTS

D	SUB-D #1	SUB-D #2	SUB-D #3	SUB-D #4	FROM	TO:
<a href="#"><u>D11</u></a>					USF President	Assistant Vice President for Government Relations
<a href="#"><u>D12</u></a>					USF President	Director/Vice President of Intercollegiate Athletics
	<a href="#"><u>D12-1</u></a>				Director or Vice President of Intercollegiate Athletics (as applicable)	Senior Associate Director of Athletics/CFO
	<a href="#"><u>D12-2</u></a>				Director or Vice President of Intercollegiate Athletics (as applicable)	Associate Director of Athletics/ Events & Championships
		<a href="#"><u>D12-2-1</u></a>			Associate Director of Athletics/Events & Championships	Associate Director of Athletics / Events Management
	<a href="#"><u>D12-3</u></a>				Director or Vice President of Intercollegiate Athletics (as applicable)	Deputy Director of Athletics/Administration & Chief of Staff
<a href="#"><u>D13</u></a>					USF President	Vice President & Chief Marketing Officer
	<a href="#"><u>D13-1</u></a>				Vice President of Marketing & Communications	Associate Vice President for Communications
<a href="#"><u>D14</u></a>					USF President	USF General Counsel
<a href="#"><u>D15</u></a>					USF President	Chief Compliance Officer
<a href="#"><u>D16</u></a>					USF President	USF General Counsel (support of administrative functions for the Chief Compliance Officer and Chief Audit)

See [USF Policy 0-100: Delegations of General Authority and Signatory Authority](#) for general guidelines for Delegations of Authority.

*Flowcharts are for illustrative purposes and may not reflect the most recent delegations, which can be found in the Delegations Index.*

# DELEGATIONS OF PRESIDENTIAL AUTHORITY – INDEX & FLOWCHARTS

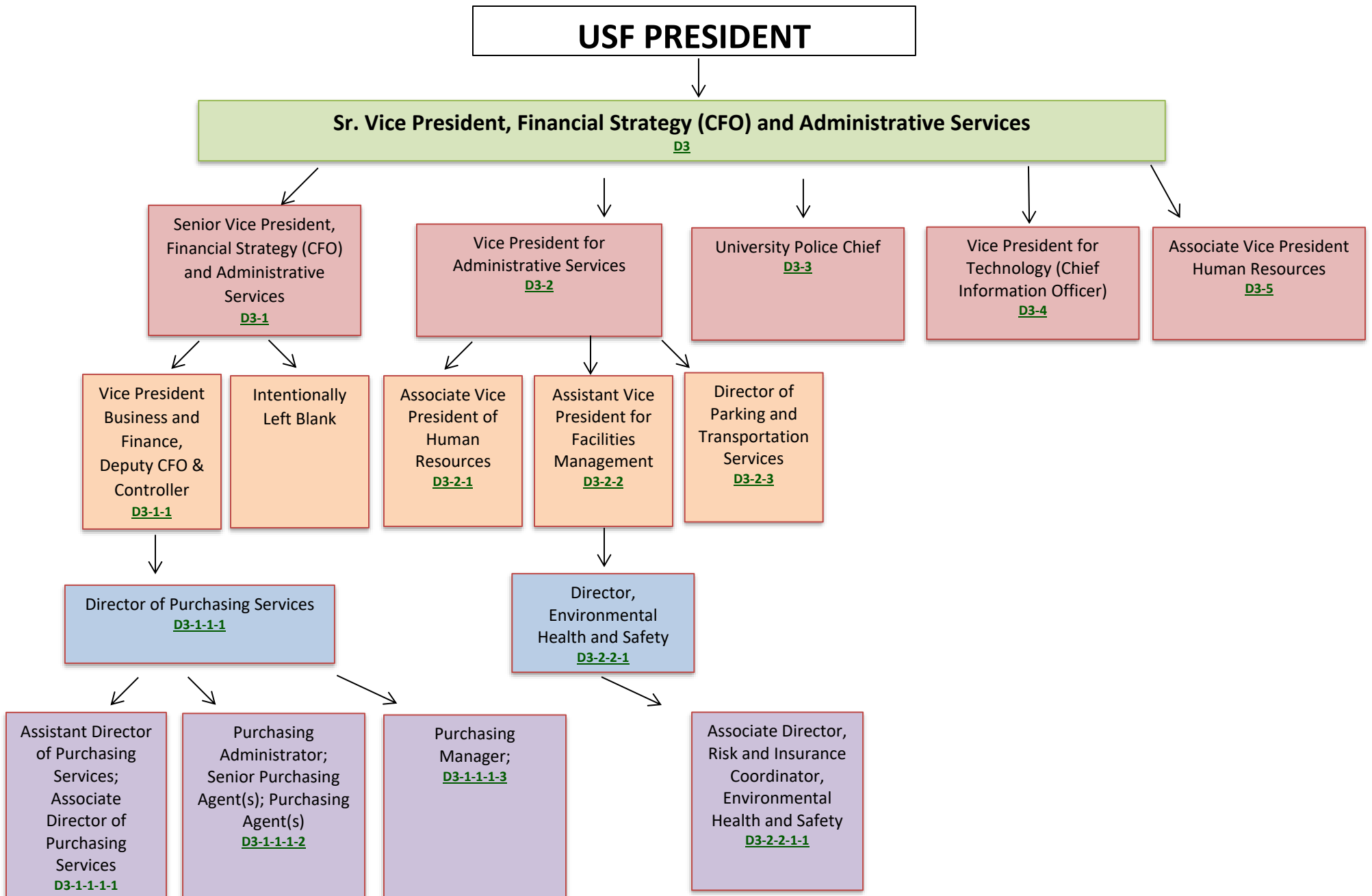


See [USF Policy 0-100: Delegations of General Authority and Signatory Authority](#) for general guidelines for Delegations of Authority.

*Flowcharts are for illustrative purposes and may not reflect the most recent delegations, which can be found in the Delegations Index.*



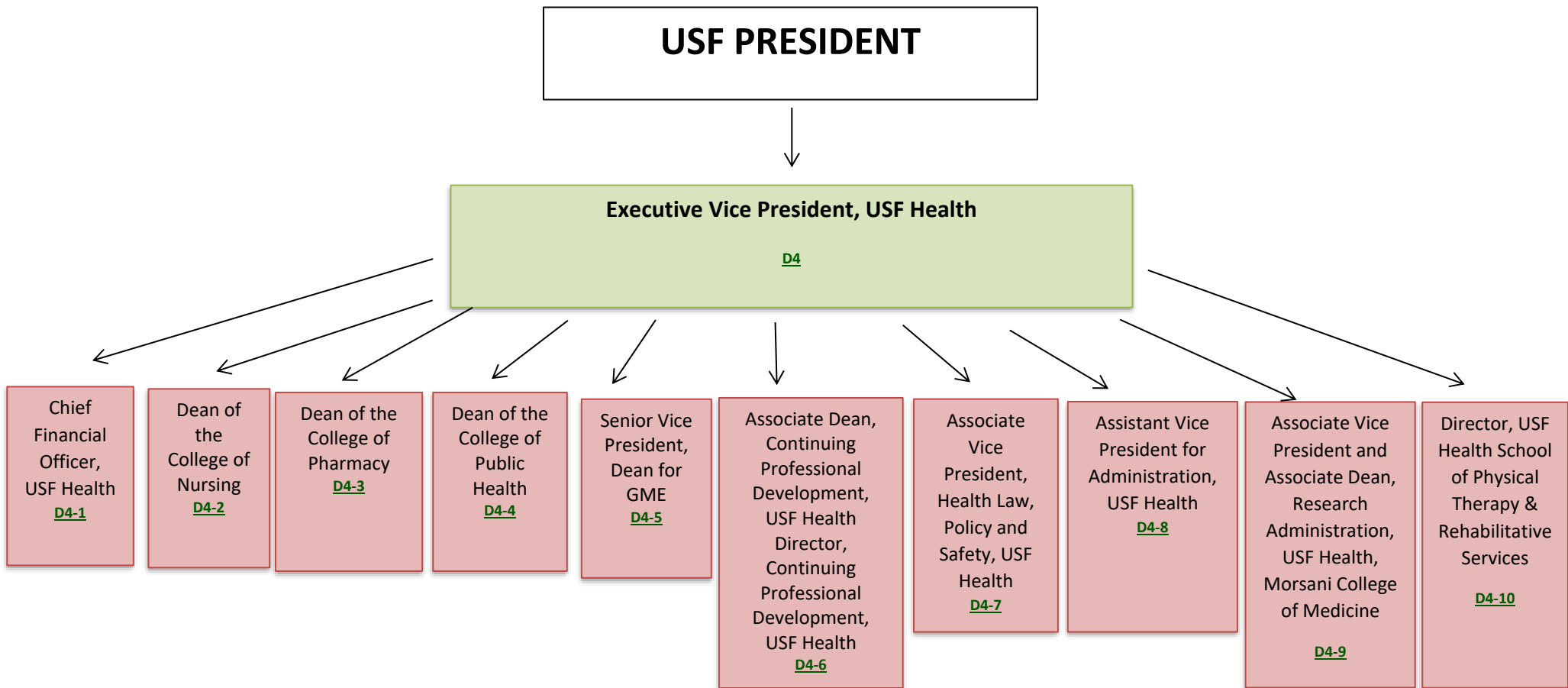
# DELEGATIONS OF PRESIDENTIAL AUTHORITY – INDEX & FLOWCHARTS



See [USF Policy 0-100: Delegations of General Authority and Signatory Authority](#) for general guidelines for Delegations of Authority.

*Flowcharts are for illustrative purposes and may not reflect the most recent delegations, which can be found in the Delegations Index.*

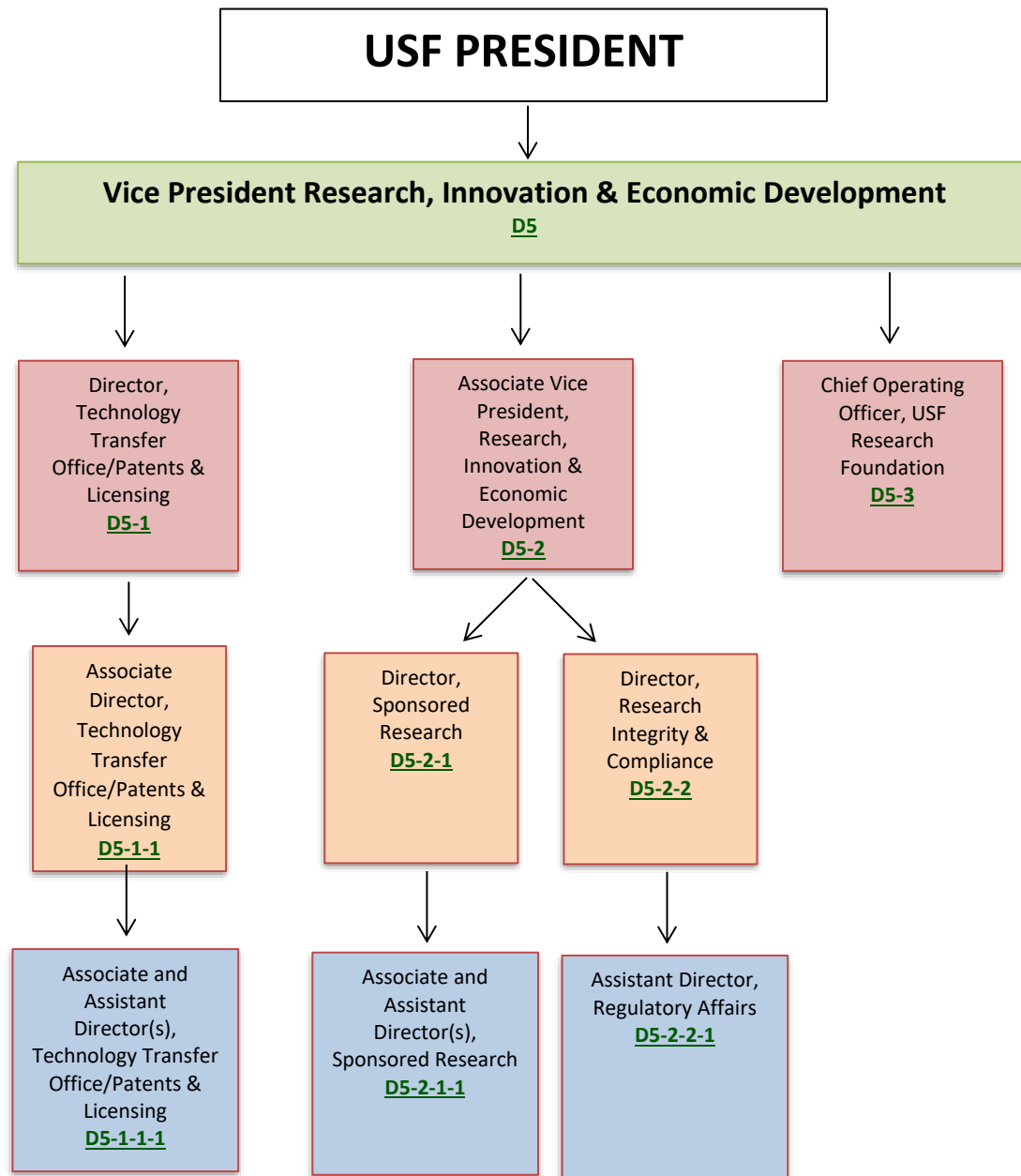
# DELEGATIONS OF PRESIDENTIAL AUTHORITY – INDEX & FLOWCHARTS



See [USF Policy 0-100: Delegations of General Authority and Signatory Authority](#) for general guidelines for Delegations of Authority.

*Flowcharts are for illustrative purposes and may not reflect the most recent delegations, which can be found in the Delegations Index.*

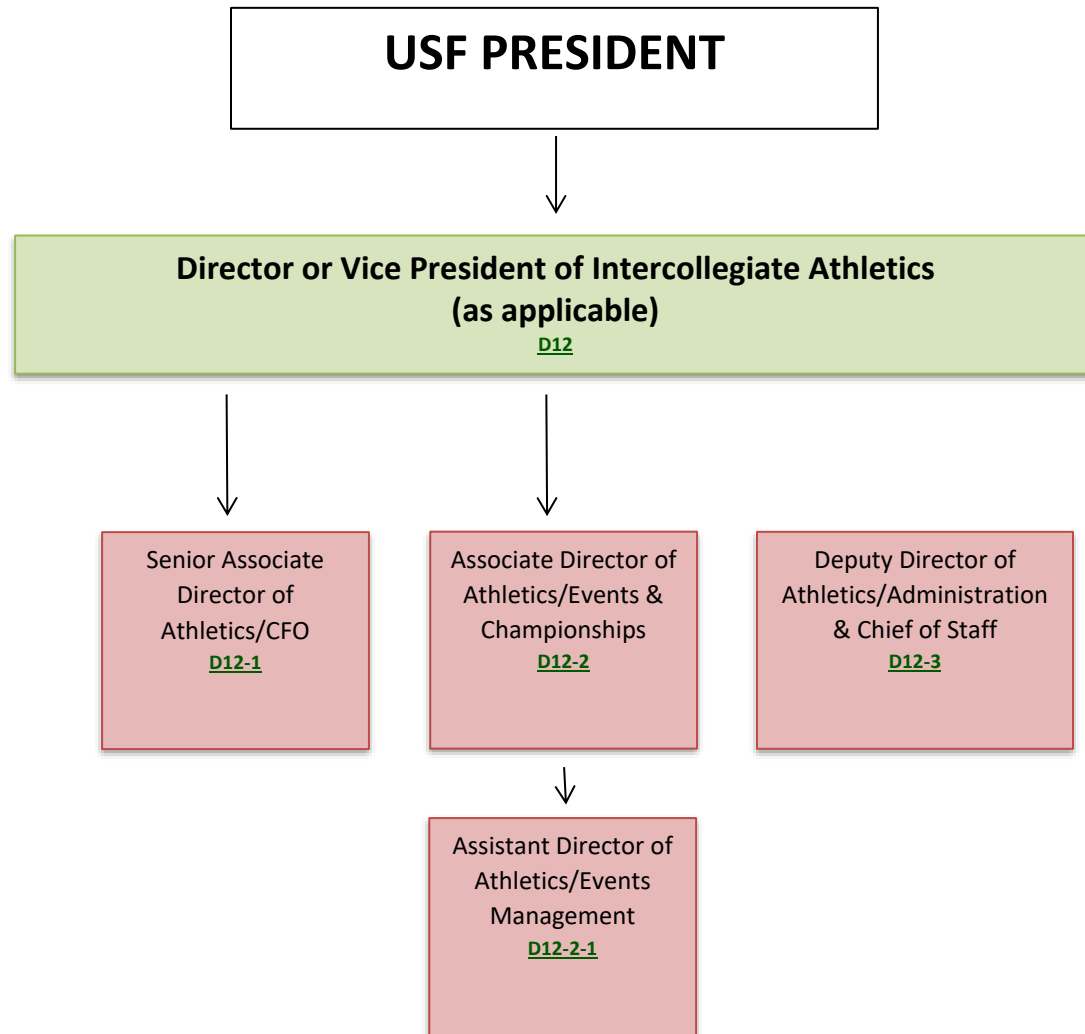
# DELEGATIONS OF PRESIDENTIAL AUTHORITY – INDEX & FLOWCHARTS



See [USF Policy 0-100: Delegations of General Authority and Signatory Authority](#) for general guidelines for Delegations of Authority.

*Flowcharts are for illustrative purposes and may not reflect the most recent delegations, which can be found in the Delegations Index.*

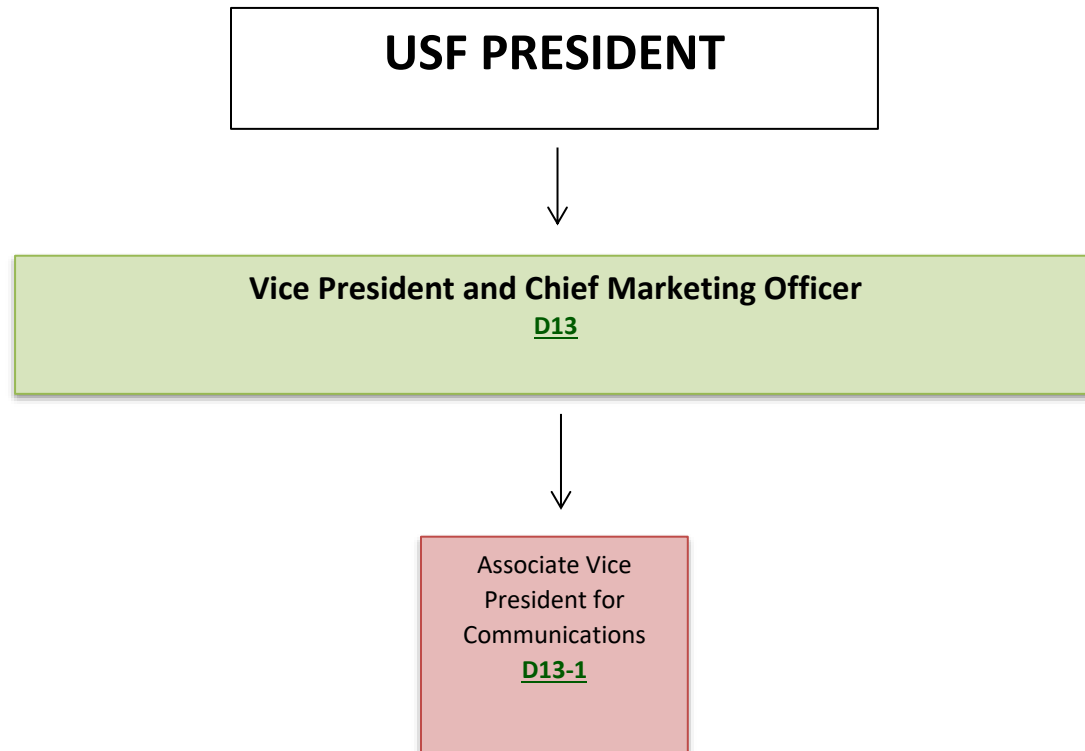
# DELEGATIONS OF PRESIDENTIAL AUTHORITY – INDEX & FLOWCHARTS



See [USF Policy 0-100: Delegations of General Authority and Signatory Authority](#) for general guidelines for Delegations of Authority.

*Flowcharts are for illustrative purposes and may not reflect the most recent delegations, which can be found in the Delegations Index.*

# DELEGATIONS OF PRESIDENTIAL AUTHORITY – INDEX & FLOWCHARTS



See [USF Policy 0-100: Delegations of General Authority and Signatory Authority](#) for general guidelines for Delegations of Authority.  
*Flowcharts are for illustrative purposes and may not reflect the most recent delegations, which can be found in the Delegations Index.*