

2023

USF School of Social Work



Major Milestones

Social work programs and organizations celebrated important anniversaries.

New Opportunities

Students and faculty expanded their impact on communities far and wide.

Letter from the Director

One of the truly astonishing things I have observed over many years is the special connection that develops between professors and students when learning dominates the conversation. In the USF School of Social Work, 2023 was no exception to affirm the value of learning and the meaning so many of us derive from these encounters. We are blessed. Learning is one of the best ways to survive and thrive in times of change, and the added value that collective learning provides to us is probably best measured in

exponential rather than linear terms. We share some of the highlights of our journey this year with you in this newsletter. We do so in appreciation for the support from students, alumni, colleagues, community agencies, friends of our school, and donors. Our hearts go out to those within and outside of our school who are deeply affected by current tragedies. We want you to know that we care.

I plan to retire in August 2024, and hopefully a successor will be appointed by that time to lead this great school and impressive community. We will continue to heal, learn, and flourish.

**- Riaan van Zyl, PhD
Professor & Director of the
USF School of Social Work**



What's new?

The CALM Self-Care Space

The Corner for a Little Mindfulness (CALM) Self-Care space (pictured) in the School of Social Work suite on the Tampa campus is a dedicated area designed to provide students, faculty, and staff with free resources to learn, experience, and teach self-care techniques.

The purpose is to help individuals reduce stress, manage anxiety, and promote mental and physical well-being through the use of provided materials, tools, and equipment.

The Remark-a-Bull Podcast

The School of Social Work launched a new podcast that explores the powerful stories of social workers, students, and social work scholars who have made an outstanding impact on communities far and wide. The Remark-a-Bull podcast is hosted by Chris Groeber, MSW, an associate in research in the School of Social Work with more than 30 years of experience in child welfare.

The Social Work Therapeutic Modalities Graduate Certificate

After kicking it off in fall 2023, the School of Social Work now offers the Graduate Certificate in Therapeutic Modalities that can enhance specialization in the social work profession, improve service delivery to vulnerable populations, and help stabilize turnover rates in social service organizations. There is a constant flow of inquiries from community professionals, alumni, current MSW students, and agencies for continuing education credits and graduate certificate opportunities. The school has also entered into several contacts to support and transform the child welfare system in Florida, including the administration of the Center for Child Welfare. We have access to approximately 75-100 child welfare agencies statewide with personnel who are often looking for graduate certificates and continuing education credit offerings to strengthen their workforce and retain skilled professionals.

The Pathway to Licensure Initiative

There is a critical shortage of licensed clinical social workers in the United States that has a dramatic impact on the service delivery gap in providing evidence-based interventions to underserved populations. The Pathway to Licensure Initiative at the School of Social Work addresses the need to increase the number of qualified and competent licensed clinical social workers by creating a pipeline from BSW to licensure and seeks to adopt strategies that build capacity and demonstrate a strong commitment to licensed clinicians in the health professions.

Currently, the School of Social Work is partnering with Sunshine Health to eliminate financial barriers to obtaining licensure through the funding of post-graduation clinical supervision, reducing the financial burden on social services agencies and future social workers, and increasing the number of social workers in the Tampa Bay area.

The Online BSW Program

As the new BSW program continues to expand, a new advisor, Matthew Beck, was appointed to support the student base.

Points of Pride

#1

national ranking for percentage (100%) of faculty with a recent citation
(Academic Analytics)

#2

statewide ranking of MSW program
(College Factual)

#3

national ranking (Best Online MSW Program 2023)
(Center of Online Education)

#3

national ranking (Best Online MSW Program 2023)
(Forbes)

#4

statewide ranking of BSW program
(College Factual)

#6

national ranking (Best Online LCSW Degree Programs 2023)
(Social Work Degree Center)

#7

national ranking – (Best Online MSW Programs 2024)
(Intelligent)

#12

faculty national ranking for articles per faculty
(Academic Analytics)

#69

national ranking of BSW program
(College Factual)

\$5,148,738

value given to the community by USF social work students.

The 2023 Herdfunder raised \$4,251

and School of Social Work faculty

also donated another

\$1,000

for the Social Work Celebration awards and refreshments.

After receiving **87** total applications, the School awarded **\$1,000**

scholarships to two BSW students and two MSW students.

Celebrating the BRIDGE Clinic's Sweet 16

The Building Relationships and Initiatives Dedicated to Gaining Equality (BRIDGE) Healthcare Clinic celebrated 16 years of serving the community.

During a banquet in the Marshall Student Center, members of the BRIDGE Clinic gathered to commemorate 16 years of the clinic's operation. In 2023, the social work department of the clinic saw 70 patients, and the students volunteered a total of 715 hours serving low-income, uninsured individuals in the local area.

Chris Simmons, PhD, LCSW, an associate professor of instruction in the School of Social Work, serves as the faculty lead of the social work team. Translator Fatima Crispin Alba, Coordinators Taylor Binger, Hailey Hall, and Aliya Leary, and Co-Directors Emi Sukijbumrung and Lianna "Lou" Hernandez also contributed to the group's success. Volunteer Coordinator Taylor Binger was recognized with the Outstanding Leadership Award for going above and beyond in her service.

Located on the Tampa campus, the clinic is student-run and free. It serves the area community and consists of interdisciplinary collaboration of medicine, physical therapy, social work, public health, and pharmacy. Students interested in medical social work or clinical social work in a primary care setting are invited to join the social work clinic.

"Thank you to our 26 student volunteers, leadership team, and licensed preceptors for another amazing year at BRIDGE and for their radical advocacy in providing services to folks who otherwise would not receive the care they deserve."

- Lianna "Lou" Hernandez

| Members of the BRIDGE Clinic celebrate the organization's 16th anniversary. |





Social Work Month Celebration

The School of Social Work and its Professional Advisory Council hosted a Social Work Month Celebration in March at the Children's Board of Hillsborough County. Seventy-eight social work community members attended the program and heard from National Association of Social Workers (NASW) Florida Executive Director Dawn Brown. Awards were given to five social workers who best exemplify social work practice and values.



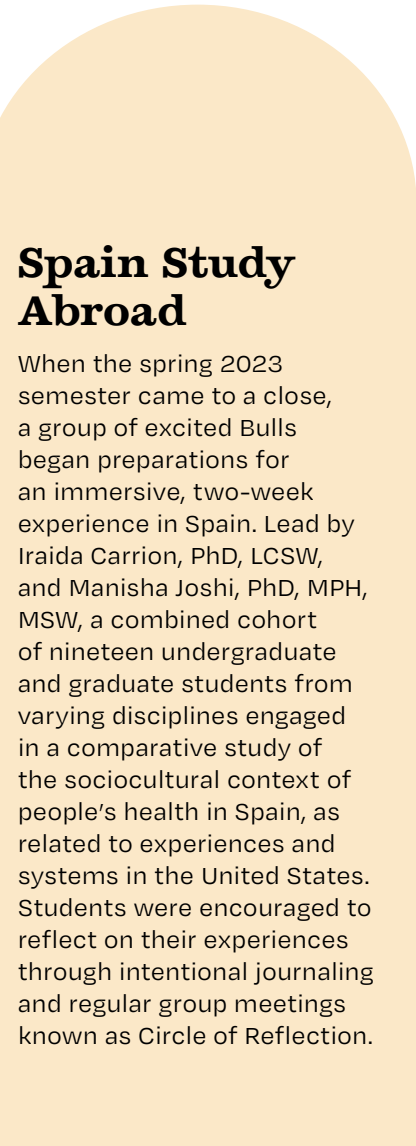
Legislative Education Advocacy Days

Social work students participated in Legislative Education and Advocacy Days (LEAD) 2023. Led virtually by the Florida Chapter of the National Association of Social Workers, LEAD allows social work students to learn about the current legislative agenda impacting the social work profession and its clients.



Spring 2023 Pinning Ceremony

Thirty-one graduates of the Bachelor of Social Work (BSW) program were celebrated at the Spring 2023 BSW Pinning Ceremony held in the MHC atrium. Students were recognized for their hard work in completing the program, and Associate in Research Chris Groeber, MSW, recognized those who studied child welfare. Associate Professor Iraida Carrion, PhD, LCSW, welcomed eight new inductees into the Phi Alpha Honors Society, and many others earned recognition from the Social Work Society.



Spain Study Abroad

When the spring 2023 semester came to a close, a group of excited Bulls began preparations for an immersive, two-week experience in Spain. Led by Iraida Carrion, PhD, LCSW, and Manisha Joshi, PhD, MPH, MSW, a combined cohort of nineteen undergraduate and graduate students from varying disciplines engaged in a comparative study of the sociocultural context of people's health in Spain, as related to experiences and systems in the United States. Students were encouraged to reflect on their experiences through intentional journaling and regular group meetings known as Circle of Reflection.



Celebrating 10 Years of Study Abroad

Associate Professor Manisha Joshi and Associate Professor Iraida Carrion hosted a celebratory event marking the 10th anniversary of the School of Social Work's study abroad programs. Carrion and Joshi embarked on this transformative journey back in 2014 when they pioneered the School of Social Work's first study abroad program in India. Fueled by student demand and a shared vision for global education, they expanded their horizons further, introducing Spain into the program in 2017. The event titled "Celebration of a Decade of Global Education: Embarking on the Future," symbolized the school's unwavering commitment to providing students with opportunities to learn about practices and policies around the globe. The celebration was more than just a reflection on the past; it was a joyous embrace of the future.



IPE Day

Students, faculty, and staff participated in USF Health's 6th annual Interprofessional Education and Practice (IPE) Day. Associate Professor of Instruction Chris Simmons, PhD, served on a panel in the morning session. Ten students were invited to compete on interdisciplinary teams and create a rich picture, mind map, and plan on how to incorporate wellness into the workplace. Assistant Professor of Instruction Vickie Lynn, PhD, Assistant Instructor Maria Paradiso, MSW, Lianna "Lou" Hernandez, and Amaya "Alex" Ramos also participated in the event.



Fall 2023 Pinning Ceremonies

In two pinning ceremonies in the MHC Atrium, fall 2023 graduates of the Bachelor of Social Work program were welcomed into the profession by School of Social Work faculty, staff, and community partners. A separate pinning ceremony was held for graduates of the new online BSW program, hosted through the Sarasota-Manatee campus, and gave the students the opportunity to meet each other in person for the first time.

Project iSED & Project MABAS

The School of Social Work has two school social worker training and tuition award programs: Project iSED and Project MABAS.

Professor Alison Salloum, PhD, LCSW, is the co-director for both of these programs in collaboration with the USF Applied Behavior Analysis (ABA) master's program. These training programs are in partnership with Florida school districts: Hillsborough County Public Schools, Pasco County Public Schools, Pinellas County Public Schools, and Manatee County Public Schools.

Project iSED: Advancing Interdisciplinary Services for Students with Severe Emotional and Behavioral Disorders

Project iSED aims to prepare students to serve as either school social workers or board-certified behavior analysts who can collaboratively design and deliver evidence-based instruction and intensive individualized interventions and supports for children with severe emotional and behavioral disorders in natural environments, classrooms, and schools. Project iSED is a 5-year, \$1.9 million grant funded by the U.S. Department of Education, Office of Special Education Programs (H325K200051).

Project MABAS: Enhancing the Promotion of Mental Health Wellbeing of Children and Youth in High-Need Schools through Preparing School-Based Behavior Analysts and Social Workers

Project MABAS aims to enhance the promotion of mental health well-being of children and youth with or at risk for behavioral and mental health challenges by preparing 40 high-quality school-based behavior analysts and social workers from diverse backgrounds to promote inclusive practices. Project MABAS is a 5-year, \$3.9 million grant funded by the U.S. Department of Education, Office of Elementary and Secondary Education, Office of Safe and Supportive Schools (S184X230042).

Project iSED: Cohort 3



Emily Braverman
Internship: Pinellas County Schools
Field Instructor: Anna Athanasatos, MSW

"I am excited to begin my career with Project iSED within Pinellas County Schools as a school social work intern and ready to bring Positive Behavioral Support and Prevent-Teach-Reinforce training into full swing."



Rachel Gousie
Internship: Hillsborough County Schools
Field Instructor: Bryan Noll, BA, MSW

"I am very grateful for the opportunities that I have had as a Project iSED scholar. Project iSED has broadened my professional repertoire through the implementation of the interdisciplinary collaboration between the social work and ABA professions. I feel more equipped to become a well-rounded school social worker who can advocate for students and provide them with effective support."



Lisette Koessick
Internship: Hillsborough County Schools
Field Instructor: Elizabeth Cabrera, MSW

"I am excited to have been selected as Project iSED scholar. This program allows me to honor my education in applied behavior analysis, while pursuing my future in a Master of children of Social Work. I can't wait to continue to serve all needs and abilities in our schools with all my skills learned as a Project iSED scholar."



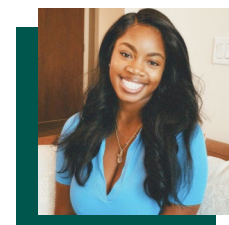
Meghan Lampley
Internship: Pinellas County Schools
Field Instructor: Angela Trotter, LCSW

"I have been working with children for most of my life and have found a passion for servicing those with high needs. Project iSED has allowed me to expand my knowledge of the possibilities of helping these students, especially when looking at the collaboration process and the benefits that social work and ABA can have. I am thrilled to be part of such an amazing team with those who share a similar passion."



Pedro Serrano-Mejia
Internship: Hillsborough County Schools
Field Instructor: Juanita Colleton, LCSW

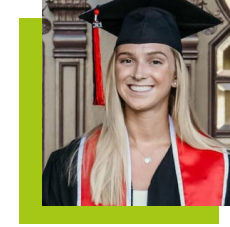
"Becoming involved within Project iSED has been one of the best opportunities that I have been a part of. Having the ability to do interdisciplinary work in the school system has always been a dream of mine since I was a child that was positively impacted by social workers. As a proud Salvadorian-American, I am eager to further develop my skills within social work through direct implementation of everything I had the privilege to learn about this year!"



Rachel Walker
Internship: Hillsborough County Schools
Field Instructor: Danece Davis, LCSW

"Being the light you desire to see in the world involves playing an active role in the world around you. Project iSED has allowed me to work with children who will soon be the world's future. This opportunity continues to grow and shape me as a social worker ready to change the world for the betterment of all!"

Project MABAS:



Kristen Raymond

"My name is Kristen Raymond, and I am from Livonia, Michigan. I went to the University of Tampa and earned my bachelor's degree in psychology. After graduation, I worked as a registered behavior technician for kids with autism. I am now a graduate student in the Master of Social Work (MSW) program. I am thrilled and honored to be chosen as one of the scholars for Project MABAS. I am excited to further my education and begin to utilize new skills I will learn in the MSW program, along with the experiences I will gain in Project MABAS. I am so excited to begin my career as social worker! Go Bulls!"



Ashley Munoz

"My name is Ashley Munoz, and I'm from Elizabeth, New Jersey and just moved to Tampa. I received my bachelor's degree in family science and human development with a minor in psychology at Montclair State University. I am currently a Master of Social Work student at the University of South Florida and a proud MABAS scholar! I have

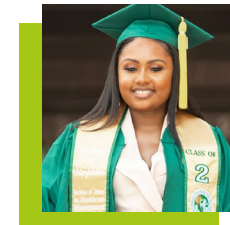
worked with children of all ages in and out of school settings and cannot wait to achieve my goal of becoming a high school social worker. Not only will Project MABAS help me get there, but it will also provide amazing skills, knowledge, and experiences that I will take with me and use throughout my career. I appreciate this opportunity and cannot wait to see what the future holds!"



Jordan Mohler

"My name is Jordyn Mohler, and I'm a Master of Social Work student at the University of South Florida. I graduated from Florida State University (go Noles!) in May 2022 with a bachelor's degree in family and child sciences and a double major of psychology. I've been a youth cheerleading and gymnastics coach, guardian ad-litem, private

nanny, and investigative intern with the Leon County Public Defender's Office. Being a MABAS scholar means so much to me because it reaffirms my belief that school social work is the right path for me. I look forward to gaining further knowledge and experiences that I otherwise would not have had. I am very thankful for this opportunity."



Brittney Simpkins

"My name is Brittney Simpkins. I am from Vero Beach, Florida. I moved to Tampa six years ago to pursue my bachelor's degree in healthcare management at the University of South Florida. I am currently enrolled in my first semester of the master's program in the School of Social Work at USF. I am honored to be a MABAS scholar. I'm excited and looking forward to working with children and helping them achieve their goals. I am so blessed for this opportunity."

Field Department

The School of Social Work has over 350 practicum agencies (regional, out of Tampa Bay area, and national). The areas of practice include family, older adults, medical, unhoused, mental health, substance abuse, LGBTQ, child and family, and schools.

About 45 new partnerships were recently added.



| Jacqueline Houston (center) spent the first week of her field placement visiting the United Nations Headquarters in Geneva, Switzerland. |

4 Sisters Solution
7 Summit Pathways
Accelerated Learning Solutions
Agusta Partnership for Children, Inc.
All Star Children's Foundation
Arenette House
Baptist Health
Bayaan Academy
Beyond Barriers
Brandon Psychiatric Group
Brookside
Candace Behavioral Health
Center for Autism & Related Disorders
Illinois
Center for Independence of the Disabled
Children's Network of Hillsborough
Comprehensive Wellness Center
Crisis Center of Tampa Bay Lori
Dandelion Health
Deaf and Hard of Hearing
Dept. of Children & Families Osceola
Early Childhood Council
Elite DNA Behavioral Health
Embrace Families, Osceola
Family & Children's Counseling Services, Inc. - Heal Play Love
Family Support Services of Suncoast
Florida Conference Office of Education
Gainesville Healing House
Guardian Recovery Network/Curasouth
Gulfside Healthcare Services
Habitat for Humanity
Help Now of Osceola
Jewish Family Services Phoenix, AZ
Just Be Rooted
Lakeview Medical & Psychiatric Healthcare
Learning Empowered Lisa
Lighthouses of SWFL
Money Talks Tampa
Neighbor to Family
New Seasons
Northern Valley Catholic Social Services
Orlando Health
PEMHS Enrichment
Planned Parenthood
Preventative Measures
Public Defenders Office 13th Judicial Circuit
Quiet Contemplation
Retreat Behavioral Health
Safe & Sound Hillsborough
Smith Community Mental Health St.
Johns County School District
St. Vincent de Paul Cares
UNF Osprey Perch
United Way Suncoast
Veterans' Heat Factory
Yale Office of LGBTQ Resources



| Akanke Omorayo-Adenrele led the department in 2023.

Director of Field Education: Akanke Omorayo-Adenrele, MSW

Akanke Omorayo-Adenrele, MSW, is an instructor and field coordinator for the online MSW program. Omorayo-Adenrele worked with the Center for the Education of Women: "Women of Color in the Academy Project," developing programs for female faculty and graduate students of color.

Omorayo-Adenrele served as an MSW Field Coordinator for the face-to-face and online Master of Social Work program at the Indiana University School of Social Work. Prior to returning to online education, she was the MSW field director at the University of North Florida. Omorayo-Adenrele emphasized clinical and critical thinking are both essential social work skills when working at any level of practice. She used her skills to work on her macro social work interest.

Her work and service interest are factors affecting immigrant and refugee women within social, political, and economical context. Lately, she is committed to unpacking anti-racism practice in social work. Omorayo-Adenrele serves on the NASW-FL and Council on Social Work Education (CSWE) sub-committee on diversity and inclusion and efforts to focus on macro practice.

Awards:

Community Award Winners:

- Social Justice Champion – Lori Iraheta-Yem, Bay Pines VA
- Engagement Champion – John Rutledge, USF Diabetes Clinic
- Community Champion – Erin McKinley, Success 4 Kids and Families

Agency Field Instructors of the Year:

- Jennifer Trivoli, Pinellas Ex-Offender Re-entry Coalition
- Regina Watson, Camelot Community Care



| BSW student Britney Guerra (center), an intern at the Manatee County Public Safety Department, celebrated the launch of "The Everlasting Garden." The garden provides clients of the Salvation Army of Manatee County and Homeless Outreach Team an opportunity to spend time outside of their dorms and off of the streets. |

Our Students

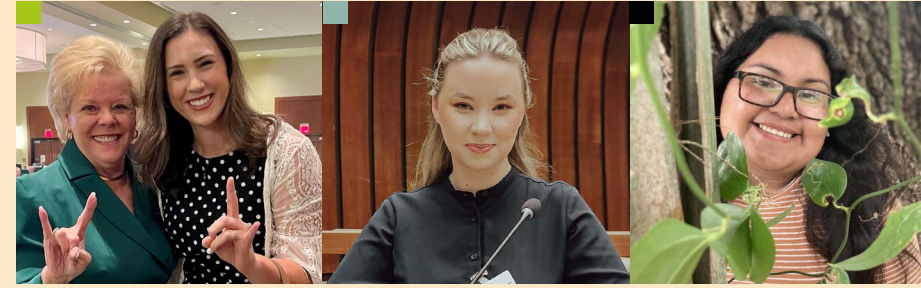
Doctoral Students

Two new students, Maria Velez and Karah Greene, joined the School of Social Work's PhD program in 2023. Maria Velez, MSW, earned her BSW ('11) and MSW ('19) from East Tennessee State University. Her research interests include undocumented migrant children and access to resources post custodially, and her teaching interests are in cultural diversity and micropractice. Velez is the current study coordinator for the Do More Feel Better Program and has provided individual and couple's therapy in private practice setting and served as a lead clinician for the Office of Refugee and Resettlement Shelter working with undocumented children and assisted in the reunification process. She has also provided intensive in-home services for youth who had history of suicidal ideation and/or suicidal attempts to prevent hospitalization or custodial care.

Karah Greene, MSW, completed her BSW ('20) and MSW ('21) at USF. Her research interests include integrated mental health support in primary care settings and increased access to quality mental and physical health care. She is also interested in researching long-term individual and systemic effects of sexual violence and interventions to reduce negative health outcomes stemming from sexual violence. Greene currently serves as the deputy director of the School of Social Work ACCESS

Lab. Greene has clinical experience at Tiny Little Jewels LLC and the Crisis Center of Tampa Bay and is a volunteer child advocate for the Hillsborough County 13th Judicial Circuit Guardian ad Litem Program.

Doctoral student Stephanie Rosado, MSW, CWHC, participated in a panel presentation at the 2023 Arthritis Foundation Pathways Conference in San Francisco, CA. This session brought together patient panelists, subject matter experts, and scientists to discuss clinical trials and the future of innovative treatments for Osteoarthritis (OA). Rosado was also on air with the Haitian American Nursing Association



(HANA) of Hudson Valley, New York to discuss OA. The HANA Health & Wellness radio show aims to increase the health literacy of its audience by hosting a variety of health and allied health professionals. Rosado also spoke on the Arthritis Foundation's podcast series "Live Yes! with Arthritis." In the episode, Rosado explored the definition of self-advocacy and provided strategies to make oneself heard. At USF, Rosado received a Global Faculty Award at the Inaugural High Impact Practice and Undergraduate Research Faculty Awards Ceremony. She was recognized for her contributions made to global education through the school's two recently introduced general education courses: Happiness and Wellbeing and Meaning in Life. Both are high-impact practice courses and are certified as Global Citizens Project courses.

Master of Social Work Students

Haley Hines-Gaal, a student in the online MSW program, spoke at the Florida Board of Governors meeting held in the Marshall Student Center. Haley Hines-Gaal grew up with a keen awareness of the importance of social workers as, after the death of her parents, she became part of Iowa's foster care system.

Jacqueline Houston, an MSW and MPH concurrent degree student, was one of only 150 students in Florida accepted into the Florida Area Health Education Center (AHEC) Scholars program for the 2023-2025 cohort. The AHEC Scholars program is a national initiative that prepares students in a variety of health disciplines to transform their collaboration on interprofessional primary healthcare teams. Houston also graduated from the United Nations (UN) Immersion Program hosted by the UN Institute for Training and Research. Houston was also awarded the Maternal and Child Health Leadership Professional Development Award from the USF Center for Excellence in Maternal and Child Health.

Undergraduate Students

Daniela De Santiago, a BSW student, received a scholarship from the Association of Latino and Latina Social Work Educators. The scholarship is awarded to students who are leaders in the field of social work and are working toward an impactful career.



2023 Graduate Student Research Symposium

Five graduate students presented their research via posters at the 2023 Graduate Student Research Symposium. Shelton Gilyard presented "Grasping the need to understand Black parents and caregivers of children with ASD." Amy Nourie presented "The problematizing of teen pregnancy is a feminist issue." Stephanie Rosado presented "Not just an 'old person's disease': Osteoarthritis and quality of life among younger adults." Emma Stevenson (pictured) presented "The future is female: Our need to research treatments for female sex offenders & implications for social workers." George Danquah – lead presenter with Jerome Galea, PhD, Karah Y. Greene, MSW, Grace M. Girenti, and Uma Nair, PhD – presented "Predictors of smoking abstinence self-efficacy in a sample of individuals ambivalent about quitting smoking."



Alum Spotlight

Tracee N. Phillips, MSW

Tracee N. Phillips, MSW, is a district coordinator of school social work services for Hillsborough County Public Schools. Phillips oversees and supports both school social worker and community agencies to meet the various needs of students within the academic setting. Phillips presently holds both a BSW ('03) and MSW ('05) from USF and seeks to pursue her LCSW in the near future.

Phillips began her professional career working in child welfare as a family development specialist, residential therapist, and foster care/adoption specialist at Children's Home Network. Working in child welfare was not only essential to Phillips's future professional journey but was also enriching, essential, and worthwhile. During this time, Phillips discovered her passion for working with children and her desire to positively impact their lives and well-being.

Phillips eventually took a temporary position as a school social worker in Hillsborough County, with the hopes of securing a permanent position. "I was initially leery, knowing the risk I would be taking leaving my permanent position in child welfare; however, it was a risk that I was willing to take," said Phillips. Phillips described the transition as difficult, given the initial change from clinical to academic; however, she learned to unite the two to become an effective school social worker. Viewing everyday as a learning opportunity, Phillips expressed that it took three years to feel confident and fully understand the role and its responsibilities.

Over the last 17 years with Hillsborough County Public Schools, Phillips has had the privilege of serving schools at the elementary, middle, and high school level, and has also served in specialty programs, including the Homeless Education and Literacy Project and school-based mental health initiative teams. Though this vast experience has prepared Phillips for her current role as the district coordinator for school social work service, she feels honored and humbled to serve the Hillsborough County Public School District in this new role. While the learning curve has not been comfortable, the opportunity to support, encourage, and train her fellow school social worker and meeting the direct needs of the students and families has been helpful. Phillips looks forward to continue to support the students and family within the community and is excited to see the difference she can make.

New Staff



Valentina Arcila

Valentina "V" Arcila earned her bachelor's degree in behavioral healthcare with a concentration in adult community services and a minor in sociology. Arcila is the academic program specialist for the in-person MSW. She supports prospective and current students on their journey in their pursuit of social work education. Arcila is passionate about student engagement and ensuring students have support throughout their academic career through cultivating a safe space for collaboration and a focus on self-care. She finds joy in providing guidance and helping others to achieve their professional and personal goals. In her free time, Arcila enjoys being outdoors exploring new places, practicing yoga, cooking new recipes, and volunteering at an animal sanctuary.



Petya Figueiredo

Petya Figueiredo is an alumna of the Honors College at the University of South Florida who serves as an academic program specialist at the School of Social Work. In her role, she primarily focuses on the BSW and PhD programs, ensuring that students' academic support needs are met. Additionally, Figueiredo is involved with program-specific events and everything travel related. Figueiredo is very passionate about mental and physical self-care and has taken on the role of chair of the school's Committee for Wellness Initiatives. One of her notable projects is the establishment of CALM, which provides a dedicated free self-care space, tools, and materials for students, faculty, and staff. Figueiredo is currently working on her Health and Wellness Coaching certifications, and in her free time she enjoys spending time with her family and friends.



Valentina Zambrano Bastidas

Valentina Zambrano Bastidas is a dedicated academic program specialist. As a proud USF alumna, she holds a special connection to the institution. Bastidas specializes in the online MSW program. She ensures that prospective students are well-informed about the program and guides them through their educational journey. Her favorite part of social work is witnessing the passion of students as they aspire to become the better people of tomorrow. Bastidas finds inspiration in their dedication to making a positive impact on individuals and communities. In her free time, Bastidas enjoys spending quality moments with her cat, exploring new and exciting food spots, and trying out various hobbies.



Lianna Hernandez

In 2023, Lianna "Lou" Hernandez, RCSWI, graduated with her MSW from USF and shortly after began working as the academic services administrator. In her role, Hernandez contributes to all programs in the School of Social Work through initiatives like Professional Development Week and guest lectures and takes a student-centered approach to the administrative organization of the school. Hernandez also works with the Curriculum Committee, adjunct instructors, student graders, and engages in student recruitment and retention. As a recent graduate, Hernandez is passionate about creating an environment where students feel empowered, cared for, and heard. Out of the office, Hernandez enjoys ballet classes, hand embroidery, and baking for friends and family. Her favorite thing about the School of Social Work is the connections she has been able to make, both as an employee and a former student.

Our Faculty

In 2023, the USF School of Social Work welcomed many new faculty.

The School of Social Work welcomed Jennifer Roth, MSW, LCSW, as an assistant instructor in the clinical social work program. Roth, a 2008 alumna of USF's MSW program, practices using a holistic approach, instead of focusing on a single problem, considering the entire picture, and utilizes a trauma-informed approach when working with clients. Her teaching philosophy centers on generalist and clinical social work practice, and her clinical experience allows her to provide her students with a diverse approach to treating clients with a variety of presenting issues. Roth's goal is to help students to become proficient, culturally competent, and skilled social workers while serving the most vulnerable populations.

Lacey Anne Karpisek, MSW, LCSW, CPH, MPH, a third-year College of Behavioral and Community Sciences PhD student, joined the faculty as a visiting assistant instructor. A USF alumna, Karpisek has worked in the field of behavioral health for over 12 years and has been practicing clinical social work since 2019. Her clinical background is in applied behavior analysis, and she currently specializes in cognitive behavior therapy, dialectical behavior therapy, and exposure response prevention treatment. Her research

interests are task shifting, implementation science, and improving mental health service access through technology-based care. Karpisek's teaching philosophy emphasizes empowerment and the incorporation of individualized teaching strategies to ensure all students learn and become exceptional mental health professionals.

Maria Paradiso, MSW, joined the School of Social Work as an assistant instructor and as the field program coordinator for the online MSW program. Paradiso's primary interests center around working within trauma-informed approaches and creating inclusive environments within educational and human service settings. She has a deep commitment to providing evidence-based services to LGBTQ+ communities as



well as implementing anti-racist and anti-oppressive practices. Paradiso has extensive experience in field education departments, notably supervising numerous BSW and MSW students over her 30+ year career. Paradiso has provided direct services to individuals and families in the fields of substance use and mental health treatment as well as in school and community-based settings and also engaged in macro-level social work practice.

Internal Promotions

Breun Belcher-Roemmich, LCSW, accepted the position of online field coordinator and assistant instructor. Belcher was previously in a visiting instructor line. Pam Alvarez, DM, MSW, was promoted to associate professor of instruction, and Melissa Thompson, MSW, LCSW, was promoted to associate instructor.

Jerome Galea, PhD, MSW, RCSWI, LCSW, was appointed by Patricia Emmanuel, MD, professor and chair of pediatrics, in a joint affiliate position in pediatrics to grow social work involvement and practice. Galea was also granted tenure and promoted to associate professor.

Highlights

Professor Alison Salloum, PhD, LCSW, received the 2023 Educator of the Year Award from the National Association of Social Workers (NASW). This award honors a highly-accomplished member of NASW who has made a difference in the field social work and is an outstanding leader. Salloum also received the 1914 Distinguished Alumni Award in Academia and Research from the Tulane School of Social Work (TSSW) Alumni Association Board. Salloum received her MSW ('94) and PhD ('05) from TSSW. This award recognizes TSSW alumni whose achievements exemplify the values of the school and who have made a remarkable impact on the profession.

Jerome Galea passed the Association of Social Work Boards clinical examination and is now an LCSW. Galea and Kristin Kosyluk, PhD, an assistant professor in the Department of Mental Health Law and Policy, are collaborating with the local organization SAFR to increase access to mental health services for first responders. The documentary shares the challenges faced by first responders, which can include having little time to recover from traumatic exposure and the stigma of asking for help.

Lori Rogovin, MSW, ACSW, an associate professor and field program coordinator, was appointed as co-chair of the Association of Baccalaureate Social Work Program Directors Field Education Committee. Rogovin will serve alongside co-chair Mary Jacque Carroll. The association represents the interests of undergraduate education and practice in social work.

The School of Social Work is excited to welcome new faculty in 2024! There are four searches ongoing: director, learning and development facilitator, assistant professor, assistant instructor/assistant professor of instruction.

More information on these positions can be found at usf.edu/jobs.



Leadership Team

Director
| Riaan Van Zyl

BSW Chair
| Guitele Rahill

Online MSW Chair
| David Kilmnick

PhD Program Director
| Sondra Fogel

Associate Director
| Chris Simmons

MSW Chair
| Maayan Lawental

**Sarasota-Manatee
Co-ordinating
Chair**
| Sarah Guadalupe

**Director of
Field
Education**
| Akanke Adenrele

Join us for a Social Work Celebration and Networking Event!

Our celebration will focus on highlighting social workers in our community and celebrating our profession.

It will be a free event, and we will give organizations an opportunity to nominate an exceptional social worker for recognition.

Details coming soon!

In Remembrance of Jane Roberts

A new fund was established to celebrate Jane Roberts, PhD, a former instructor from the School of Social Work. After her passing in 2022, Roberts's legacy and love of research continues on at USF.

Consider making a gift to support students who need to travel to conferences and for faculty to further their research.

bit.ly/Jane-Roberts



Grants & Contracts

Alison Salloum

Project MABAS: USF College of Behavioral and Community Sciences faculty Catia Cividini-Motta, Kwang-Sun Cho Blair, Kimberly Crosland, and Alison Salloum have been awarded a \$3.9 million training grant from the U.S. Department of Education to fund Project MABAS (Enhancing the Promotion of Mental Health Wellbeing of Children and Youth in High-Need Schools through Preparing School-Based Behavior Analysts and Social Workers). The project aims to enhance the promotion of the mental health of children and youth with or at risk for behavioral and mental health challenges by preparing 40 high-quality school-based behavior analysts and social workers from diverse backgrounds.

Jerome Galea

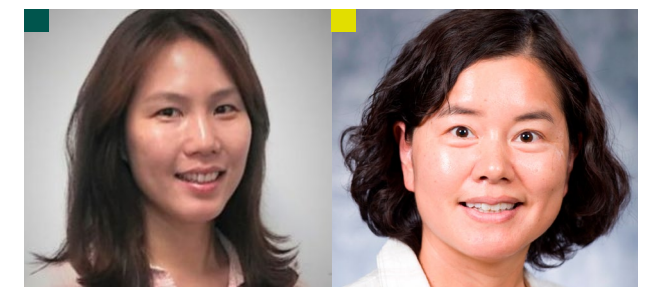
Development and pilot testing of an optimized conversational agent or "chatbot" for Peruvian adolescents living with HIV to facilitate mental health screening, education, self-help, and linkage to care: Adolescents living with HIV (ALWH) are disproportionately affected by depression which reduces adherence to HIV antiretrovirals, increases viral load, and doubles mortality risk. Because most ALWH live in low- and middle-income countries, few receive depression treatment due to a severe lack of mental health services and specialists in low-resource settings. This proposal develops and tests for feasibility and acceptability of a "chatbot" to deliver depression education, self-help skills, and care linkage for ALWH in Lima, Peru and builds on several years' experience by our team in providing accompaniment to ALWH struggling to maintain optimal antiretroviral adherence. Borne out of our work with Peruvian ALWH, this project is in direct response to their request to increase access to depression care services. Galea was awarded \$150,000 from the International AIDS Society.

Understanding and Addressing Geographic Barriers to Accessing Tuberculosis Services in a High-burden Urban Setting: Galea was included in a R01 5-year proposal funded (1R01AI168424-01A1) by the National Institutes of Health with his PI colleagues Helen Jenkins and Courtney Yuen from Boston University. Tuberculosis (TB) is curable but remains one of the top 10 causes of death globally. Middle-income countries

(MIC) have 86% of the global TB burden, with much of this burden concentrated in urban settings. Around 30% of people with TB are not diagnosed, and among those who start treatment, around 15% do not achieve a successful outcome. TB elimination requires an improved understanding of how to reduce barriers to diagnosis and treatment. Geographic barriers to accessing TB services – long travel times, lack of public transit, and difficult terrain – can contribute to both undiagnosed and untreated TB. There is limited knowledge about how geographic access barriers impact TB outcomes in MIC urban settings, how best to measure geographic accessibility in these settings, and how to design interventions that address intersecting access barriers. In Lima, Peru, the team will: 1. Develop a community-level risk score that predicts incomplete TB treatment, 2. Understand how geographic accessibility contributes to diagnostic delay at the individual level, and, 3. Identify treatment support interventions for addressing geographic and other access barriers that are optimal for different types of patients.

Interdisciplinary Research Grant

Multiple CBCS faculty were selected by the USF Research Advisory Board to receive the \$20,000 Interdisciplinary Research Grant, which supports collaborative research projects. School of Social Work Assistant Professor Jeongsuk Kim, PhD, MSW, Professor Nan Park, PhD, MSW, and Professor Alison Salloum, as well as Department of Criminology Associate Professors Rachael Powers, PhD, and Shelly Wagers, PhD, received the grant. They will work together with Jennifer Hulett, assistant professor from Sinclair School of Nursing at the University of Missouri, on a project titled, "Acceptability and Feasibility of the Mantram Repetition Program to Reduce Mental Health Problems in Korean American Women with a History of Intimate Partner Violence." Department of Criminology Associate Professor Jessica Grosholz, PhD, and Professor and Chair John Cochran, PhD, will work with School of Social Work Associate Professor Sondra Fogel, PhD, LCSW, on their project titled, "Floridians' Support for and Willingness-to-Pay for Prison Programming and Reentry Services Aimed at Reducing Recidivism."



Publications

Book Chapters

Rahill, G., Joshi, M., Carrington, C., Panchanadeswaran, S. (2023). Non-partner Sexual Violence in Haiti. In: Martin, C., Preedy, V.R., Patel, V.B. (eds) *Handbook of Anger, Aggression, and Violence*. Springer, Cham. https://doi.org/10.1007/978-3-030-98711-4_130-1

Journal Articles

Bell, T. R., & **Rosado, S.** (2023). HoopGurlz's biased recruiting: Racial and positional stereotyping in girls' basketball scouting reports. *Feminist Media Studies*. <https://doi.org/10.1080/14680777.2023.2258295>

Fogel, S. J., Bjerregaard, B., Cochran, J. K., & Smith, M. D. (2023). Capital punishment trials of youthful offenders: The impact of ACEs mitigation. *Youth & Society*. <https://doi.org/10.1177/0044118X231165817>

Fogel, S. J., Nourie, A. E., Rosado, S., & Gilyard, S. (2023). Reflections on recruiting PhD students: Change happens from within. *Reflections: Narratives of Professional Helping*, 29(3), 85-89. <https://reflections.narrativesofprofessionalhelping.org/index.php/Reflections/issue/view/145/20>

Galea, J. T., Chu, A. L., Sweetland, A. C., Jimenez, J., Yataco, R., Calderón, R., Zhang, Z., Huang, C.-C., Lecca, L., & Murray, M. (2023). Latent TB and depressive symptoms in household contacts of persons with active TB. *The International Journal of Tuberculosis and Lung Disease*, 27(9), 682-687. <https://doi.org/10.5588/ijtld.22.0609>

Joshi, M., Paul, P., Jean-Baptiste, C., **Rahill, G. J.,** Odans, E., Salinas-Miranda, A., Heger, J., & Rice, C. (2023). Prevalence and correlates of suicidal ideation in a sample of urban Haiti residents. *International Journal of Mental Health*. <https://doi.org/10.1080/0207411.2023.2255435>

Kim, J., Rizo, C. F., Wretman, C. J., Alzuru, C., Fulton, D., Lotz, L. M., Chesworth, B. R., Givens, A. D., & Macy, R. J. (2022). Understanding intimate partner violence service delivery for Latinx survivors in rural areas. *Violence Against Women*. <https://doi.org/10.1177/10778012221140136>

Kim, J., Wretman, C. J., Radtke, S. R., Fraga Rizo, C., & Macy, R. J. (2023). Characteristics of and circumstances associated with female intimate partner problem-included suicides: Analysis of data from the National Violent Death Reporting System (2003-2019). *Journal of Interpersonal Violence*. <https://doi.org/10.1177/08862605231173436>

Kwon, C. K., **Guadalupe, S. S.,** Archer, M., & Grooms, D. A. (2023). Understanding career development pathways of college students with disabilities using cripp theory and the theory of whole self. *Journal of Diversity in Higher Education*. <https://doi.org/10.1037/dhe0000464>

Littlewood, K., Cooper, L., Rosenthal, M., Averett, P., Yelick, A., & Bennett, R. (2023). Children's Home Network's Kinship Navigator Program: Connecting to Concrete Resources Through Peer-to-Peer Kinship Navigation Services. *Families in Society: The Journal of Contemporary Social Services*. <https://doi.org/10.1177/10443894231196283>

Littlewood, K., Fedus, D., Devine, A., Langousch, D., Cooper, L., & Rosenthal, M. GRG Tools We Can Use: Findings and Psychometrics on the GrOW Survey for Grandfamily Support Groups. *Journal of Human Behavior in the Social Environment*. <https://doi.org/10.1080/10911359.2023.2281967>

Littlewood, K., Cooper, L., Rosenthal, M., Averett, P., Pylant, J., Bennett, R., & Spadola, C. E. (2023). Supporting the lived experience through the implementation of peer-to-peer kinship navigation services. *Journal of Human Behavior in the Social Environment*. <https://doi.org/10.1080/10911359.2023.2187914>

Matta-Singh, T. D., Sharma, S., Ali, T., Piechota, A., Abboud, A., Fried, T., Monin, J., & Mroz, E. L. (2023). Former dementia caregivers' high and low point narratives: What is remembered, and how is it shared? *Aging and Mental Health*. <https://doi.org/10.1080/1360763.2023.2256252>

Nourie, A. E. (2023). The Problematizing of Teen Pregnancy is a Feminist Issue. *The Journal of Sociology & Social Welfare*, 50(3), Article 1. <https://doi.org/10.15453/0191-5096.4665>

Rhodes, D. J., Geyton, T., & Ost, J. (2023). The Integration of Social Work Values and Principles in Police Work. *Journal of Forensic Social Work*, 7(2), 43-58. <https://doi.org/10.15763/issn.1936-9298.2023.7.2.43-58>

Rosado, S. E. (2023). Osteoarthritis affects us too: An expert panel survey of factors important for younger adult wellbeing. *Social Work in Health Care*. <https://doi.org/10.1080/00981389.2023.2191654>

Rosado, R., Fogel, S. J., Kratz, S. E., & **Nourie, A. E.** (2023). Facing the COVID-19 opponent: Checking in with former collegiate athlete women at halftime. *Sport Social Work*, 4, 1-4. <https://doi.org/10.33043/SSWJ.4.1>

Spadola, C. E., Groton, D. B., Giorgio Cosenzo, L., Fantus, S., Hilditch, C. J., Burke, S. L., **Littlewood, K.,** Bertisch, S. M., & Zhou, E. S. (2023). Sleep and sleep knowledge among social work students: Implications for mental health and self-care education. *Journal of Human Behavior in the Social Environment*. <https://doi.org/10.1080/10911359.2023.2204125>

Salloum, A., Lu, Y., Echiverri-Cohen, A., Metts, A, V, Salomon, K. Chen, H. & Storch, E. A. (2023). The roles of therapeutic alliance and negative cognitions in parent-led treatment versus standard care therapy for posttraumatic Stress. *Child Youth Care Forum*. <https://doi.org/10.1007/s10566-023-09774-5>

Presentations & Workshops

Society for Social Work and Research 27th Annual Conference

Members of the School of Social Work presented at the Society for Social Work and Research 27th Annual Conference in Phoenix, AZ. Sondra Fogel, PhD, ACSW, LCSW; Jerome Galea, PhD, MSW, RCSWI; Nan Sook Park, PhD, MSW, MS; Alison Salloum, PhD, LCSW; Jeongsuk Kim, PhD, MSW; and doctoral student Stephanie Rosado, MSW, CWHC, attended the conference. The theme was "Social Work Science and Complex Problems: Battling Inequities and Building Solutions."

Fogel, S.J., Rosado, S. Galea, J.T., & Hyde, C. (2023). Incentives to Participants in Community-Based Research: Who Decides What Is Reasonable? Roundtable session.

Mogro-Wilson, C., Fogel, S.J., & Anderson, K (2023). Writing and Reviewing for Refereed Journals: Discussion with Editorial Advisory Board Members. Roundtable session.

Fogel, S.J., Piedra, L. Robbins, S., Zelnick, J., Goodkind, S., & Kim, M. (2023). Invited Journal Editors' Workshop II: Forum on Publishing Qualitative Research. Invited Workshop.

Kim, J., Macy, R. J., Rizo, C. F., Wretman, C. J., & Radtke, S. R. (2023). Female Suicide Victims with Intimate Partner Problems and Their Suicide Intention Disclosure. Poster Presentation.

Kim, J., Macy, R. J., Rizo, C. F., Wretman, C. J., & Radtke, S. R. (2023). Characteristics of and Circumstances Associated with Female Suicide Related to Intimate Partner Problems. Poster Presentation.

Radtke, S. R., Zhao, R., Zhang, H., Wretman, C. J., Rizo, C., Kim, J., & Macy, R. J. (2023). Associations between Chinese Stakeholders' Life Experiences and Professional Perceptions of Domestic Violence. Poster Presentation.

Wang F & Park, N. S. (2023). Social Determinants of Health Care Delays during the COVID-19 Pandemic Among Racial and Ethnic Minority Older Adults in the United States. Poster Presentation.

Park, N. S., Park, J., Rhee, M., & Jang, Y. (2023). Dementia Caregiver Burden Among Korean Immigrants in the United States: Qualitative Inquiry Using the Stress Process Perspective. Poster Presentation.

Yuri, J., Jangmin, K., Yoon, H., Park, N. S., Chiriboga, D.A., Rice, E., & Kim, M. T. (2023). Perceived Burdensomeness of Older Korean Americans to Their Healthcare Partners: An Egocentric Network Assessment. Poster Presentation.

Park, J., Jang, Y., Rhee, M. K., & Park, N. S. (2023). Perceptions of Nursing Home Placement Among Korean American Family Caregivers for Persons with Dementia. Poster Presentation.

Muster, C., Salloum, A. (presenting author), Evan, S. & Storch, E. A. (2023). Parent-Led Therapist-Assisted Treatment for Childhood Trauma: Parents and Childrens Perceptions of Trauma Exposure Activities and Changes. Oral Paper Presentation.



2023 NASW-FL Conference

Students and faculty representing the USF School of Social Work recently attended the 2023 Florida Chapter of the National Association of Social Workers (NASW-FL) conference. Assistant Professor Dasha Rhodes, PhD, LMSW and recent BSW Sarasota graduate Jam Ost presented at the conference. Their research poster was titled, "There are no typical days: Lessons learned among law enforcement social workers." Students who attended were able to network with social workers and gain new knowledge about the profession.

Community Driven Approaches to Providing Mental Health Support: Problem Management Plus in the United States

Associate Professor Jerome Galea, PhD, LCSW, MSW, presented during a webinar hosted by the Blue Cross Blue Shield of Massachusetts Foundation. The webinar explored how the evidence-based intervention Project Management Plus (PM+) – which was originally developed by the World Health Organization to address mental health treatment gaps in low- and middle-income countries – is now being implemented in the U.S. Galea talked about his training of bilingual USF Master of Social Work students to deliver PM+ in the USF BRIDGE Clinic.

2023 ASC Annual Meeting

PhD student Britani Holland, MSW, LCSW, shared preliminary findings of a national survey exploring the support for and willingness to pay for programming and reentry services aimed at reducing recidivism among criminal offenders with adverse childhood experience at the 2023 American Society of Criminology (ASC) Annual Meeting. The project is funded by the USF Interdisciplinary Research Grant, and Holland is working with School of Social Work Associate Professor Sondra Fogel, PhD, and Department of Criminology faculty John Cochran, PhD, and Jessica Grosholz, PhD.

4th Annual Career Institute

Assistant Professor of Instruction Vickie Lynn, PhD, MSW, MPH, led a workshop at the 4th Annual Career Institute hosted by North Carolina Central University's Career Counseling Program. Lynn and her colleagues presented "Integrating Educational and Vocational Objectives in Counseling People Living with HIV." The theme of the virtual event was "Addressing Career Counseling and Employment Needs: Prioritizing the Physical, Mental, and Economic Health and Well-Being of People Living with HIV."

2023 (PRIM&R) Annual Conference

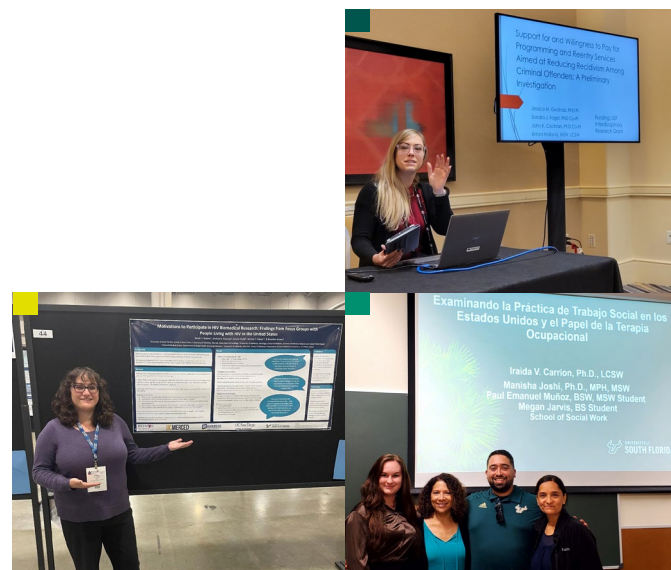
PhD student Karah Greene, MSW, presented two posters based on her work with Associate Professor Jerome Galea at the 2023 Public Responsibility in Medicine and Research (PRIM&R) Annual Conference in Washington, DC. One of her presentations was titled, "HIV Cure-related Study Vignettes Capture Stakeholder Perspectives on Ethical Payment Amount." She also presented her poster, "Motivations to Participate in HIV Biomedical Research: Findings from Focus Groups with People Living with HIV in the United States" at the conference.

University of Miguel Hernandez Interprofessional Conference

While studying abroad in Alicante, Spain, USF students participated in an interprofessional conference organized by the Department of Occupational Therapy at the University of Miguel Hernandez, Spain. Alongside faculty Iraida Carrion, PhD, LCSW, and Manisha Joshi, PhD, MPH, MSW, students Paul Muñoz and Megan Jarvis presented "Examining Social Work Practice in the U.S. and the Role of Occupational Therapy." The presentation covered topics such as cultural competence, interdisciplinary collaboration between social workers and occupational therapists, and current research and trends in providing comprehensive care to clients. At the end of the workshop, the group challenged the audience to recognize their own cultural beliefs and values and acknowledge their potential differences from the individuals with whom they interact.

17th European Society for Traumatic Stress Studies Conference

Alison Salloum and colleagues Marie Lindebø Knutsen and Pernille Gurandsrud with the Norwegian Centre for Violence and Traumatic Stress Studies provided a master class training titled "Parent-led Therapist-Assisted Cognitive Behavioral Therapy for Children after Trauma" at the 17th European Society for Traumatic Stress Studies Conference in Belfast, Northern Ireland. Salloum also presented her individual paper, "The Roles of Therapeutic Alliance and Negative Cognitions in Parent-Led Treatment versus Standard Care Therapy for Posttraumatic Stress."



Special Thanks

Professional Advisory Committee

- Ashley Aubin | Clinical Director, Ellie Mental Health
- Dezeray Caiati, LCSW | Behavioral Resources Unit, Hillsborough County Sheriff's Office
- Tara Connell | School Social Worker, Pinellas County Schools
- Nikki Daniels | Associate Executive Director, Champions for Children
- Patricia Henderson | Outreach Manager and Community Liaison, Senior Connection Center
- Myrna Hogue | Supervisor of Social Work Services, Hillsborough County Schools
- Pam Jeffre | Executive Director, Success 4 Kids and Families
- Davia Lerebours | Executive Director, PACE Center for Girls Hillsborough County
- Carol McFarlane | Chief of Social Work Services, James A. Haley VA
- Charlotte McHenry | President and CEO, Senior Connection Services
- Sean Powell, MSW, LCSW, CCM, OSW-C | Director of Social Work and Family Medical Services, Moffitt Cancer Center
- Clara Reynolds, MBA | President and CEO, Crisis Center of Tampa Bay
- Alisha Stanton | Chief of Social Work Services, Bay Pines VA

Social Work Student Scholarship Fund

The Social Work Student Scholarship Fund (#536009) was developed in 2016 in celebration of 40 years of social work education at USF. The scholarship will ensure that awards are made to USF social work students who will carry the social work profession forward to boldly engage in improving the well-being of individuals and society.

Make a difference today for a social work student and your gift will keep giving as they make a difference in the lives of many others. Please visit the social work website to donate.

usf.edu/chcs/social-work

The University of South Florida Foundation, Inc. is a 501(c)(3) tax-exempt organization soliciting tax-deductible private contributions for the benefit of the University of South Florida. The Foundation is registered to solicit charitable contributions with the appropriate governing authorities in all states requiring registration. The organization is located at 4202 E. Fowler Ave., ALC 100, Tampa, FL 33620. Financial and other information about the University of South Florida Foundation's purpose, programs and activities can be obtained by contacting Manager of Central Records, 4202 E. Fowler Ave., ALC 100, Tampa, FL 33620 or by calling (813) 974-9110. If you are a resident of any of the following states, please review the applicable, required disclosure statement. FLORIDA: SC No. 59-0879015 A COPY OF THE OFFICIAL REGISTRATION AND FINANCIAL INFORMATION MAY BE OBTAINED FROM THE DIVISION OF CONSUMER SERVICES BY CALLING TOLLFREE, WITHIN THE STATE, 1-800-HELP-FLA OR VIA THE INTERNET AT WWW.800HELPFLA.COM. CONTRIBUTIONS ARE DEDUCTIBLE FOR FEDERAL INCOME TAX PURPOSES IN ACCORDANCE WITH APPLICABLE LAW. REGISTRATION IN A STATE DOES NOT IMPLY ENDORSEMENT, APPROVAL, OR RECOMMENDATION OF THE UNIVERSITY OF SOUTH FLORIDA FOUNDATION BY THE STATE.





UNIVERSITY of
SOUTH FLORIDA

**College of Behavioral &
Community Sciences**

School of Social Work

13301 Bruce B Downs Blvd.,

Tampa, FL 33612-3807

usf.edu/cbcs/social-work

(813) 974-2063